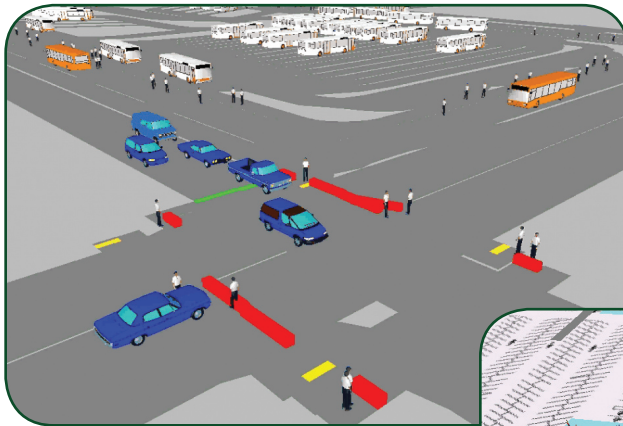




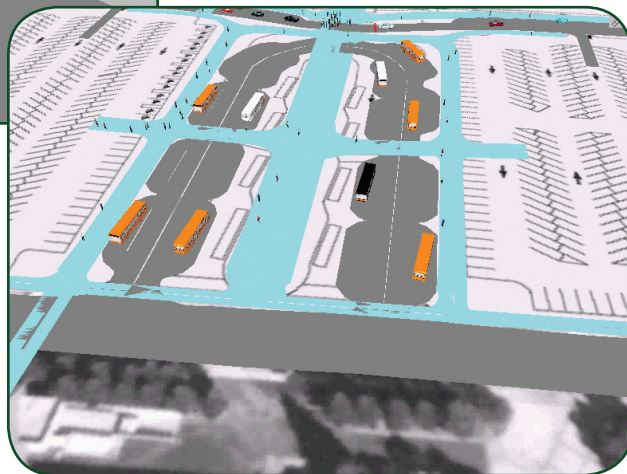
Transit Center Microsimulation

Operations Analysis and Simulation of Transit Center Projects

The major investments that transit operators and regional planning agencies are making towards the construction and operation of multi-modal transit centers presents a major opportunity for the use of microsimulation. Multi-modal VISSIM simulation can be used to analyze signalized intersections, driveway operations, bus bays layouts, on-site access and circulation, pedestrian flows and multi-modal level of service operations. Identifying potential issues and improving the design/operation of the multi-modal transit center is the major benefit of using multi-modal VISSIM simulation.



*Images of
Transit Center
Microsimulations*



Transit Center Microsimulation

- **Who needs this?**

Transit Agencies and Local Jurisdictions

Transit agencies and local jurisdictions would benefit from both the technical analysis, identification of potential issues, improving the design and operation of the transit center, and the visual simulations for presentation to stakeholders and the public.

- **How is it better than what I already have?**

Traditional transit planning does not provide the detailed measures of effectiveness that transportation engineers and planners need to effectively design and operate a multi-modal transit center. In addition, the simulation presents the technical information in a format suitable for public presentations to elected officials and stakeholders.

- **Who else is using it?**

Fehr & Peers is among the leaders in the use of VISSIM microsimulation of Multi-Modal Transit Centers.

